

# The California Collection

Frascio Return To Door (RTD) levers are inspired by and matched in most cases with a standard Frascio lever, and have been designed to comply with the California requirement that the lever returns to within ½" of the face of the door.

RTD levers can be used on an as-needed basis where required to conform to code, such as in corridor applications and public space egress. As a result of the flexible mounting platform systems offered by FR International, RTD and standard levers can be combined on any given leverset.

## California Collection RTD levers

6210 Base

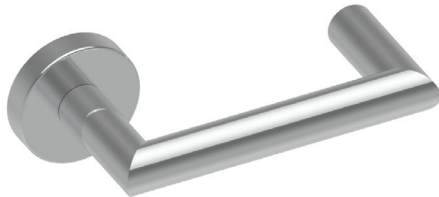


## Matching lever without return to door

270 Metro



5150 Gamma



5100 Lucia



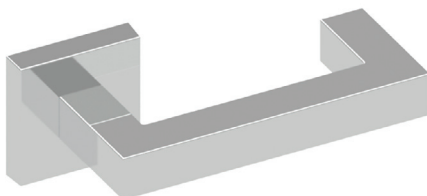
5702 Stefano



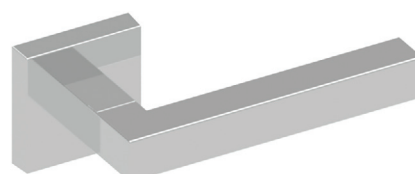
5700 Loredana



6220 Kappa

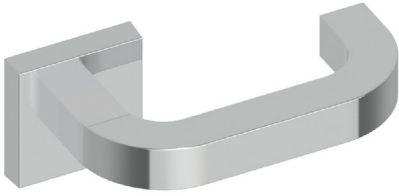


220 Alpha



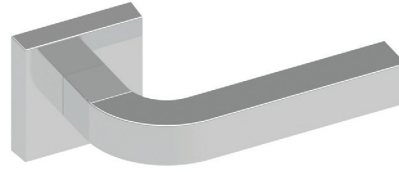
California Collection RTD levers

6230 Tau



Matching lever without return to door

230 Beta



5000 Alessia



5200 Loft



5752 Ellise



5750 Adina



5130 Delta



5810 Sigma



More Frascio lever designs can be viewed on our website. FR International can custom design Return To Door levers to meet your design needs. Contact us directly to discuss your project's requirements.